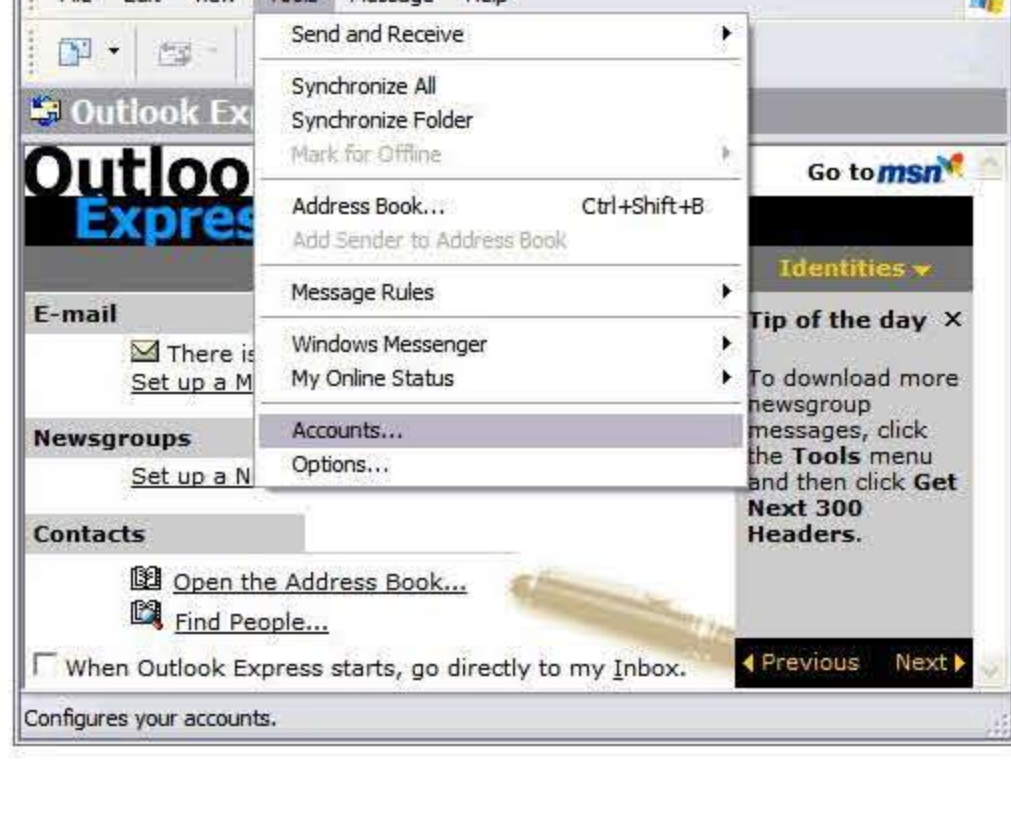


# Setting Up Your E-mail in MS Outlook Express

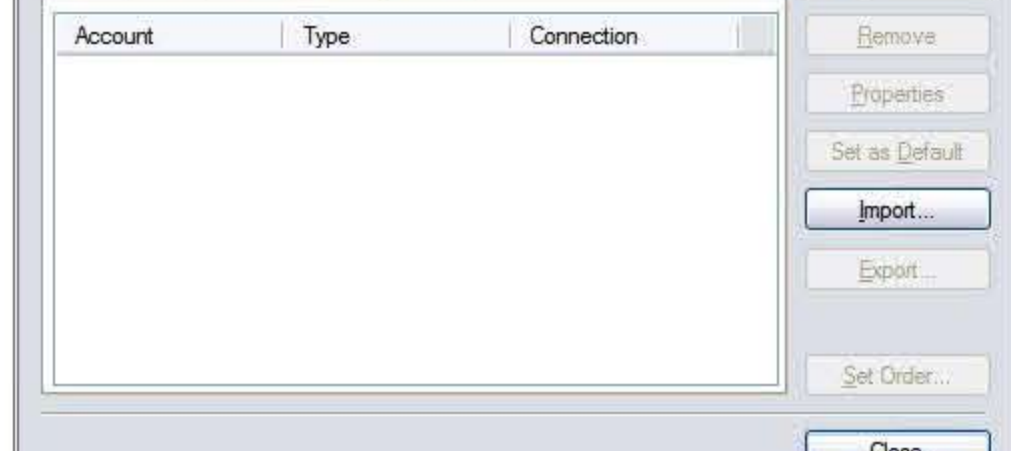
This tutorial shows you how to set up Microsoft Outlook Express 6 to work with your e-mail account. This tutorial focuses on setting up Microsoft Outlook Express 6, but these settings are similar in other versions of Microsoft Outlook Express. You can set up previous versions of Microsoft Outlook Express by using the settings in this tutorial.

## To Set Up Your E-mail Account in Microsoft Outlook Express

1. In Microsoft Outlook Express, from the **Tools** menu, select **Accounts**.



2. Go to the **Mail** tab and from the **Add** menu, select **Mail**.



3. In the **Display Name** field, enter your full name and click **Next**.



4. In the **E-mail address** field, enter your email address and click **Next**.



5. On the **E-mail Server Names** page, enter your information as follows:

**My incoming mail server is a**  
Select **POP3**.

**Incoming mail (POP3, IMAP or HTTP) server , type** **aimailbox.com**

**Outgoing mail (SMTP) server , type** **aimailbox.com**

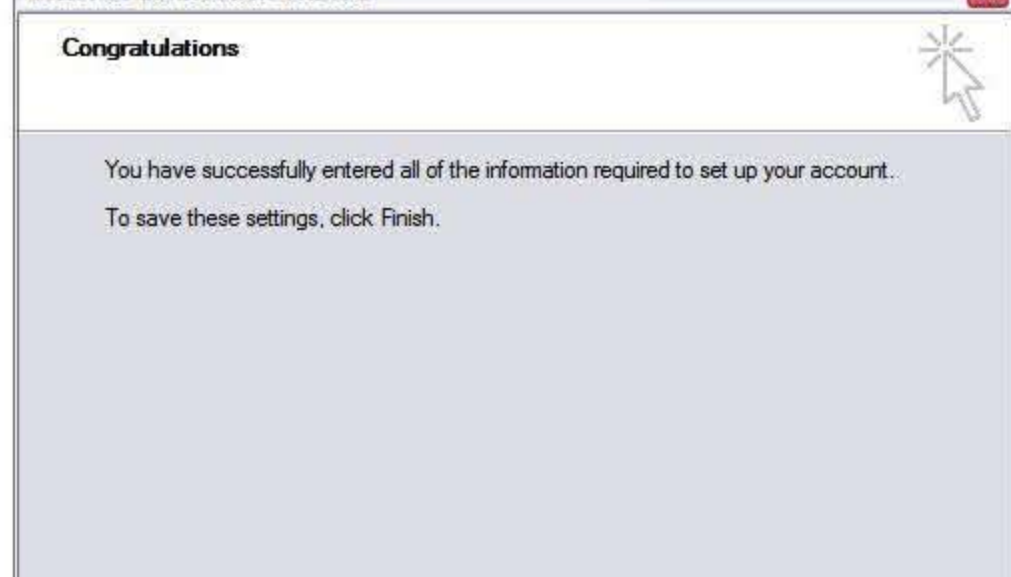
Click **Next**.



6. In the **Account Name** and **Password** fields, enter your email address and password, and then click **Next**.



7. On the setup confirmation page, click **Finish**.



8. On the **Mail** tab, select the account you just created and then click **Properties**.



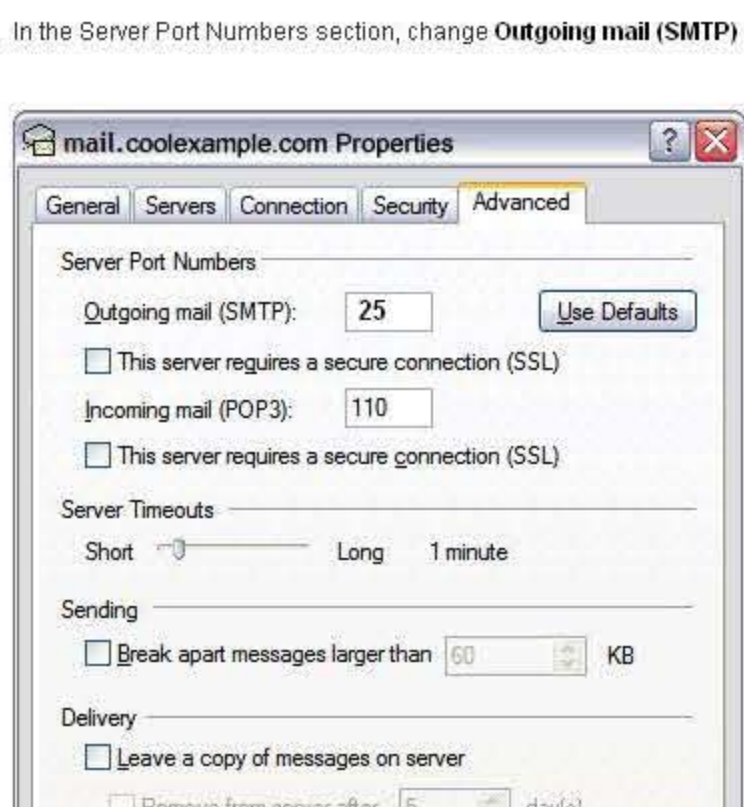
9. Go to the **Servers** tab.

10. Select **My server requires authentication**, and then click **Apply**.



11. Go to the **Advanced** tab.

12. In the **Server Port Numbers** section, change **Outgoing mail (SMTP)** to **25** and the **Incoming mail (POP3)** to **110** then click **Apply**.



13. (Optional) If you would like to keep a **copy** of your email messages stored on your email provider's servers, in the **Delivery** section, select **Leave a copy of messages on server**.

Your Outlook Express account is now set up. Click **Close** to close the Internet Accounts window and return to your Outlook Express.